

## Precision Parts. Infinite Possibilities.



### BRINGING YOUR VISION TO LIFE.

StenTech's expanded Parts Division turns complex ideas into precision engineered realities, from first prototype to full-scale production.

[WWW.STENTECH.COM/PARTS](http://WWW.STENTECH.COM/PARTS)

**SOLUTIONS**







MADE IN USA  
HIGH-DETAIL CHEMICAL  
ETCHING FROM OUR  
FACILITY IN INDIANA.



LASER-CUT COMPONENTS ENGINEERED  
WITH EXCEPTIONAL ACCURACY.

## Eliminate Manufacturing Uncertainty.



We understand that the success of your project depends on delivering quality parts manufactured at the right cost and within your timeline. We also understand the challenges of selecting the right manufacturing process and are here to guide you quickly and confidently.

Our custom metal parts manufacturing facilities specialize in photo etching and laser cutting processes. Both provide the highest quality and

precision for today's part designs. With a keen eye for spotting potential issues, we ensure that your part is the first step toward a successful product launch, and we strive to eliminate unnecessary delays.

Our team is dedicated to providing exceptional service and responsive attention to keep you in control of your project and out of the dark.

### Precision Parts

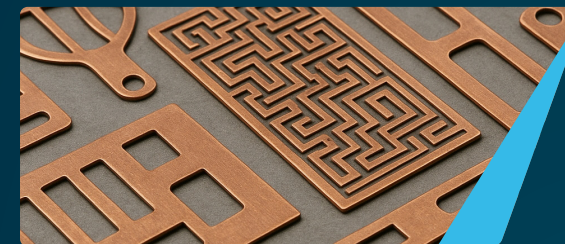
- » Small or Large, Simple or Complex, Thin or Thick
- » Quick Turnaround Quotes
- » Honest sensible pricing
- » Rapid Lead-Times
- » Production Quality Prototypes
- » Schedule Flexibility
- » Full engineering support
- » Reliable Expedited Delivery
- » #1 in Service & Satisfaction

## Our Core Services



### Chemical Photo Etching

Photo etching is a precision subtractive process that uses photo-resist and chemical etchants to produce thin metal parts with simple or complex geometries.



### Chemical Copper Etching

Etched copper parts offer superb electrical and thermal conductivity for high-performance electronics, with copper alloys adding strength, corrosion resistance, and cost-effective precision.



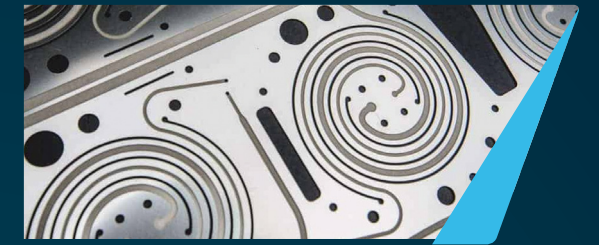
### Aluminum Etching

Aluminum etching is increasing thanks to its light weight, strength, conductivity, corrosion resistance, and non-magnetic properties.



### Electroforming

Electroforming builds ultra-precise metal parts atom by atom, delivering smooth walls, complex geometry, and exceptional durability across demanding applications.



### Hybrid Etch-Laser Process

Hybrid manufacturing combines photo etching and laser cutting to create complex, cost-efficient parts faster, maximizing design flexibility, precision, and production efficiency.



### Chemical Stainless Steel Etching

Stainless steel offers clean, accurate etching and natural corrosion resistance through its chromium content, delivering strong, smooth components for many industrial applications.



### Laser Cutting

High-speed fiber lasers produce clean, burr-free cuts with minimal heat, delivering precise, versatile results from thin metal foils to heavy sheet applications



### CNC Machined Parts

Our CNC Machining Department manufactures precision metal parts, including heavier components, built for strength, stability, and control.





Automotive



Aerospace / Defense



Medical



Electronics



Manufacturing



We find solutions for the most challenging part designs to accommodate new and emerging technologies across many industries.



## We don't just make parts.

We optimize quality, accelerate timelines, reduce costs, and provide custom solutions that simplify design and procurement, protect your brand, and support scalable growth across every stage of production.

## Solving Your Parts Challenges.



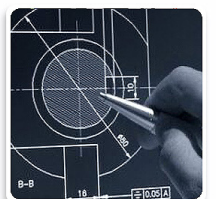
Are you an engineer who is not sure how to manufacture a complex part design?

Are you a purchasing professional who is struggling to find a reliable manufacturing partner who can deliver quality parts on time and within your budget?

Are you a sheet metal fabricator who is running out of capacity or needs a manufacturing process to compliment your own capabilities?

We can help. As a custom metal parts manufacturer, our goal is to provide quick, precise solutions and guide you through the process with clarity and confidence. We offer a straightforward understanding of the manufacturing approach that best fits your specifications, backed by fast responses and practical solutions.

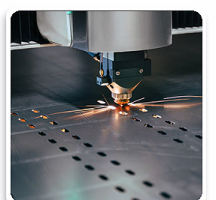
We understand the needs of customers across the spectrum, from small engineering firms, tech start-ups, and job shops to medium and large EMS providers and OEMs. We partner with both domestic and international companies, always with a strong focus on service, satisfaction, and long-term trust.



ENGINEERS

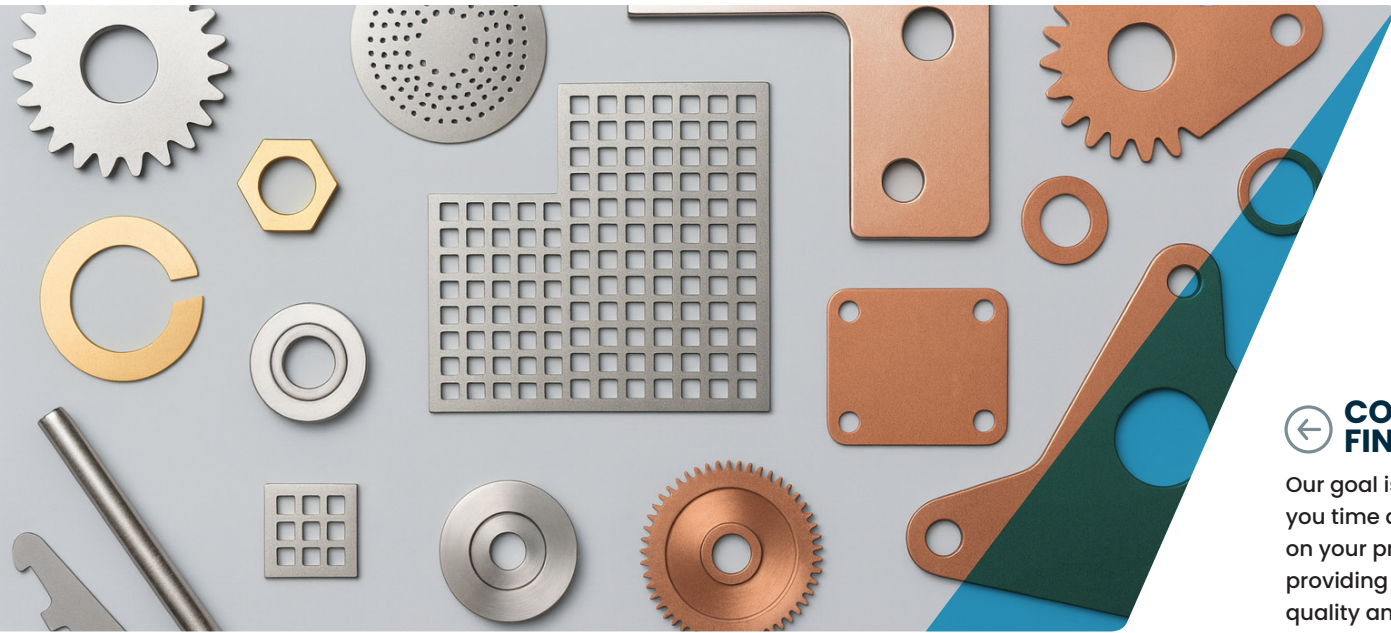


BUYERS



FABRICATORS





## ← COATINGS & FINISHES

Our goal is to save you time and money on your projects while providing the highest quality and variety.

## Materials: From Ultra-Thin to Heavy-Duty

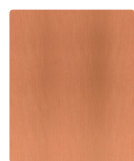
Our metal stock includes the most commonly requested materials for photo-etched and laser cut parts, available in a range of tempers and thicknesses. Our supply partners offer excellent delivery responsiveness.

If a required thickness is not in stock, we can “mill down” or etch the material to the desired thickness. This is a key advantage of chemical etching: the process does not alter metal properties or flatness, and it eliminates long waits for specific stock, resulting in shorter lead times.



### WHITE METALS

- Stainless Steel
- Cold Rolled Steel
- Alloy 42
- Nickel Silver
- Nickel
- Kovar
- Aluminum
- Inconel
- Molybdenum
- Hy-Mu 80
- Titanium
- Invar



### RED METALS

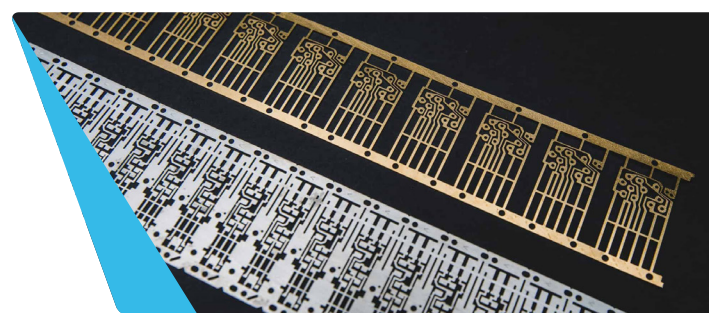
- Copper
- Beryllium Copper
- Brass
- Phosphorus Bronze

### NON-METALS

- Silicon
- Plastic

## Coatings, Plating and Polishes

Advanced coatings and polishes enhance durability, corrosion resistance, conductivity, and appearance, offering tailored finishes that improve performance and longevity in demanding applications.



- Electropolishing
- PVD
- Anodization
- Bright Tin
- Black Zinc
- Nickel Sulfamate
- Matte Tin
- Gold Plating
- Silver Plating
- Passivation
- Bright Nickel
- ...and more

## Forming & Finishing Services

Once a precision part is cut, the work doesn't stop at flat metal.

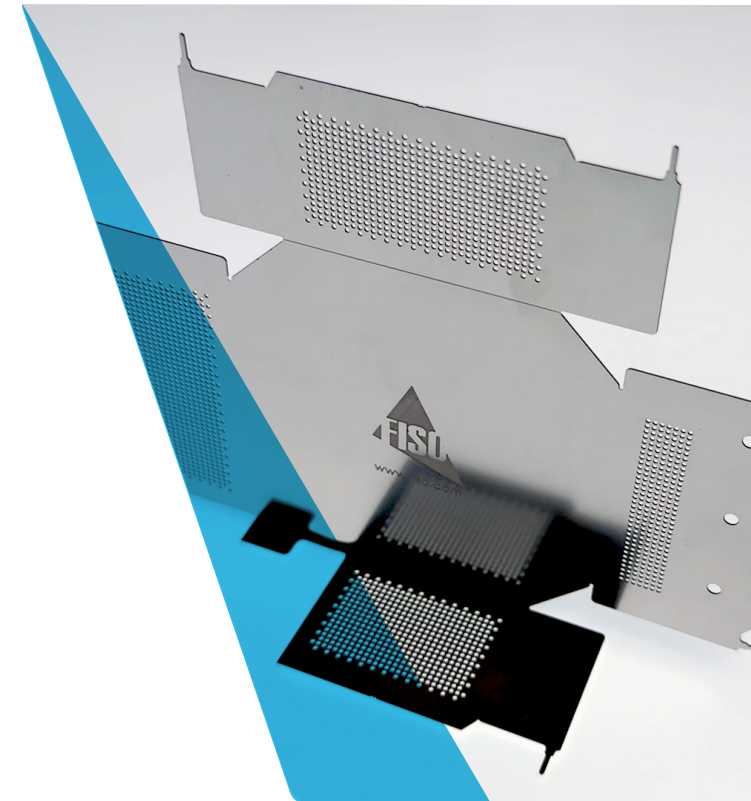
StenTech Parts Division now offers integrated forming and finishing services, enabling components to move seamlessly from development to production-ready use.

After cutting, parts can be deburred and polished to remove sharp edges and achieve the required surface finish. From there, forming transforms flat metal into engineered components by bending and shaping parts to precise specifications so they fit and function within larger assemblies.

Whether it's folded edges, formed tabs, or complex bends, forming allows parts to become functional components, ready to integrate into higher-level products and production systems.

This capability is especially valuable for rapid prototyping and scalable production, ensuring accuracy, consistency, and repeatability from first article through larger-volume runs.

From flat stock to finished, formed components, StenTech delivers end-to-end precision.



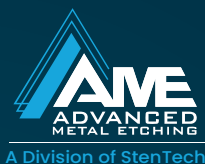
## Quality and Compliance

Our Quality Policy is to achieve excellence by improving quality, customer satisfaction, employee satisfaction, and efficiency on a daily basis while maintaining competitive pricing and on-time delivery of our precision metal parts.

We recognize our employees as StenTech's most valuable asset, and by consistently improving and reviewing our quality standards of the photo etching process, our employees can harness the joy of commitment, follow-through, and excellence produced by their workmanship. We provide 100% traceability from raw material stock to the final product.

In addition to meeting the ISO 9001:2015 and ITAR Standards, we work closely with each customer to ensure we produce the parts according to exact specifications. Our employees are cross-trained in all phases of the metal etching production and multiple inspections take place throughout the entire process.





**AME is a Division of StenTech.**

